

# Anti-GDF15 Polyclonal Antibody

Cat. No:K107581P

## Summary:

**【Product name】** : GDF15

**【Source】** : Rabbit

**【Isotype】** : IgG

**【Purification】** : Affinity purification

**【Gene ID】** : 9518

**【Swiss Prot】** : Q99988

**【Calculated】** : 34kDa

**【Species reactivity】** : Human

**【Tested applications】** : IHC

**【Recommended dilution】** : IHC 1:50-200.

**【Subcellular location】** : Cytoplasm

**【Immunogen】** : A synthetic peptide of human GDF15

**【Public Immunogen Range】** : 30-80/308aa

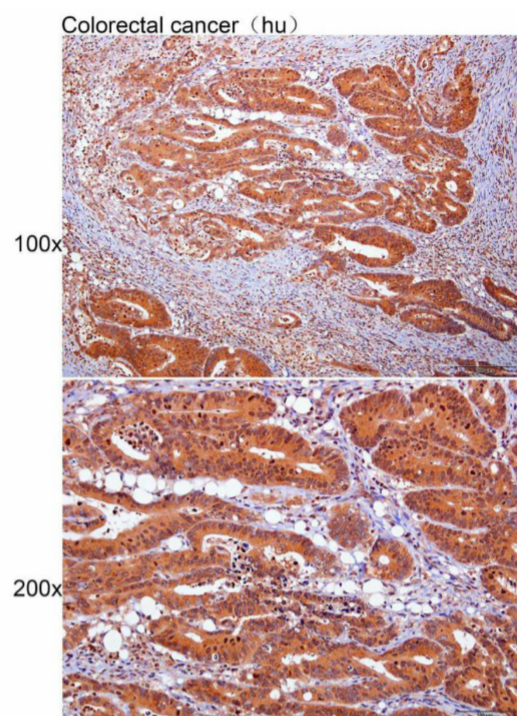
**【Storage】** : Store at -20°C. Avoid freeze/thaw cycles.

## Background:

The protein encoded by this gene belongs to the transforming growth factor-beta (TGF-beta) family. The protein is expressed in a broad range of cell types, acts as a pleiotropic cytokine and is involved in the stress response program of cells after cellular injury. Increased protein levels are associated with disease states such as tissue hypoxia, inflammation, acute injury and oxidative stress.



## Verified picture



Immunohistochemistry of paraffin-embedded Human colorectal cancer with GDF15 antibody diluted at 1:100.